

Term 4
Week 2

NEWSLETTER

Lightning Reef

PRIMARY SCHOOL



RESPECT
RESPONSIBILITY
KINDNESS
PERSISTENCE



UPCOMING DATES:

Week 3:

Tuesday October 22nd

Eaglehawk SC Scavenger Hunt Transition for 2025 Y7 Students

Thursday October 24th

Foundation Excursion to Kyabram Fauna Park

Friday October 25th

World Teachers' Day

Whole School

Bendigo Show Excursion

Week 4:

Monday October 28th

Yr 1– Stay and Play +

Yr 2– Overnight Camp at School

Wednesday October 30th

Bendigo Cup Holiday

Week 5:

Thursday November 7th

3/4 Big Day Out

From the Principal :

Dear Families and Friends.

I had a lovely time away, travelling around Vietnam and Cambodia over three weeks, but missing the start of Term 4 has meant I have had to play catch-up over my first week back. This meant I just didn't have time to get to the newsletter on Friday.

I am sorry for the inconvenience!

LIGHTNING REEF PS- TRANSITION PROGRAM (2025)

We are very excited to welcome our 2025 Foundation students and families for their transition visits in preparation for next year. The dates to lock in are as follows:

Tuesday 19th November – 9:15am to 10:00am

Tuesday 26th November – 9:15am to 10:30am

Tuesday 3rd December – 9:15am to 11:00am

Tuesday 10th December – 9:15am to 11:30am . The final day (10 December) is the Statewide Transition Day where all state school students across Victoria attend their school for 2025.

We also have Year 6 students that are attending Eaglehawk Secondary College spending time there on Tuesday morning. We hope the kids have a great time!

UPCOMING EXCURSIONS AND CAMPS

The next few weeks see the P-4 Camps and Major Excursions happening. Please keep an eye out for COMPASS notifications, and please be in touch if you need to make a payment plan. We do not want any student to miss out due to home finances! Your teachers can all be messaged on Dojo or text their school

Principal news continued....

2025 ENROLMENTS

We are into the business of planning for the 2025 school year, and a major part of this work is determining our enrolment numbers for next year. If you are planning on enrolling your child/ ren, or transferring from our school, we would appreciate knowing as changes to enrolments directly impact forward planning.

ASTHMA & ALLERGIES

If children need medication for Hay Fever and/or allergies through the school day please bring it to the school office, clearly named with pharmacy label attached. Make sure that the medication is in date. Inform the school office if your child has been medicated before school on any particular day. If your child is asthmatic please provide an up-to-date asthma plan, medication available at school and, if appropriate, a spacer.

WATER BOTTLES

As the weather warms up we ask that children have a drink bottle to use in the classroom. It is important to keep hydrated by drinking water and equally is important not to have interruptions during learning time, needing to go to the bubble taps. Please only fill with water!

Lightning Reef Primary School Preparedness And Actions For The Bushfire Season

Fire danger ratings indicate how dangerous a fire would be if one started in those conditions and provide clear directions on the safest options for preserving life. They can be a trigger for action in community and for school and household level fire plans.

Schools and children's services listed on the Department of Education and Training's Bushfire At-Risk Register (BARR) and those at some lower risk of bushfire or grassfire on the Category 4 list will be closed when a Catastrophic fire danger rating day is forecast in their Bureau of Meteorology district. Schools and early childhood services listed on the Department of Education and Training's Bushfire At-Risk Register (BARR) and those at lower risk of bushfire or grassfire on the Category 4 list take pre-emptive actions on elevated fire danger days to minimise the risk of being caught in a fire in these conditions.

The category of risk (per the BARR or Category 4 list) determines the actions that the school or early childhood service will need to take on days of elevated fire danger. Our school has been identified as being one of these schools at high bushfire or grassfire risk and is listed on the Bushfire at Risk Register (BARR) category 3 school. **Our school will close on a day forecasted as Catastrophic fire danger rating in North Western fire district.**

The department will advise our school of the potential for a Catastrophic fire danger rating as information becomes available, however the pre-emptive closure will be confirmed by 1pm the day prior to Catastrophic fire danger day.

Fire danger ratings are forecast by the Bureau of Meteorology up to four days in advance. Should a Catastrophic day be forecast, we will notify you of the potential closure by an email or hard copy letter and Dojo.

If closure of the school due to a forecast Catastrophic day will be confirmed on the day prior and we will provide you with advice before the end of the school day. Once confirmed, the decision to close will not change, regardless of improvements in the weather forecast. This is to avoid confusion and help your family plan alternative care arrangements for your child. It is also important to note that:

- ◆ No staff will be on site on days where the school is closed due to a forecast Catastrophic day.
- ◆ Out-of-school-hours care will also be cancelled on these days.
- ◆ School camps will be cancelled if a Catastrophic fire danger rating day is forecast for the Bureau of Meteorology district in which the camp is located, or if the travel involves passing through areas that have Catastrophic fire danger.

Families are encouraged to enact their Bushfire Survival Plan on Catastrophic fire danger rating days. On such days, children should never be left at home alone or in the care of older children. For those of us living in a bushfire prone area, the Country Fire Authority (CFA) advises that when Catastrophic days are forecast, the safest option is to leave the night before or early on the morning of the Catastrophic day. As part of preparing our school for potential hazards such as fire, we have updated and completed our Emergency Management Plan for 2023-24 .

What can parents do?

Make sure your family's bushfire survival plan is up-to-date and includes alternative care arrangements in the event that our school is closed due to elevated fire danger or a Catastrophic fire forecast.

Further information can be found on the CFA's website. Ensure we have your current contact details, including your mobile phone numbers. Keep in touch with us by reading our newsletters, checking our website. Most importantly at this time of year, if you're planning a holiday or short stay in the bush or in a coastal area, you should check warnings in advance of travel and remain vigilant during your stay. If your child is old enough, talk to them about bushfires and your family's Bushfire Survival Plan. Twitter (<https://twitter.com/vicemergency>) ABC local radio, Sky News and other emergency broadcaster .

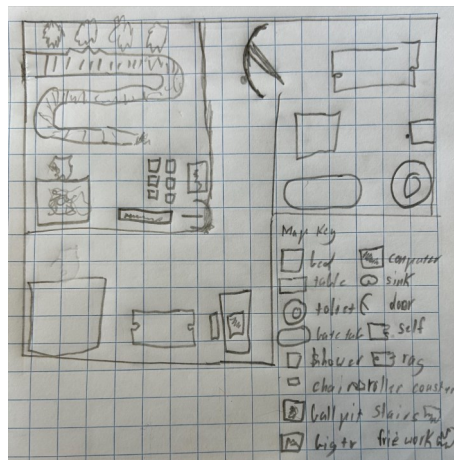
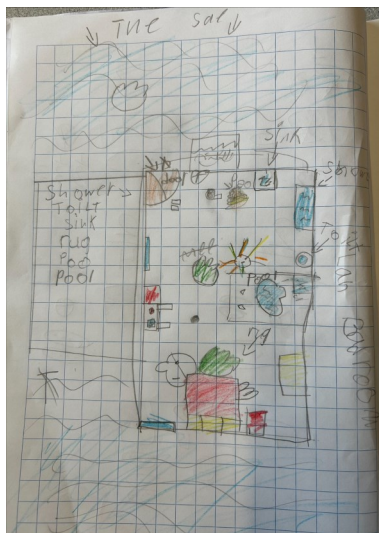
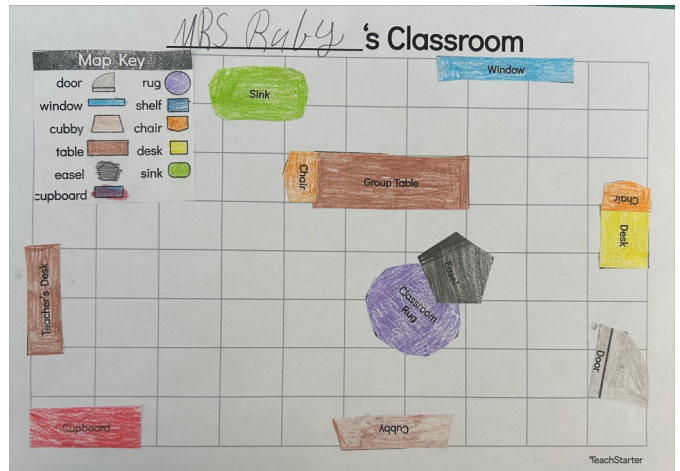
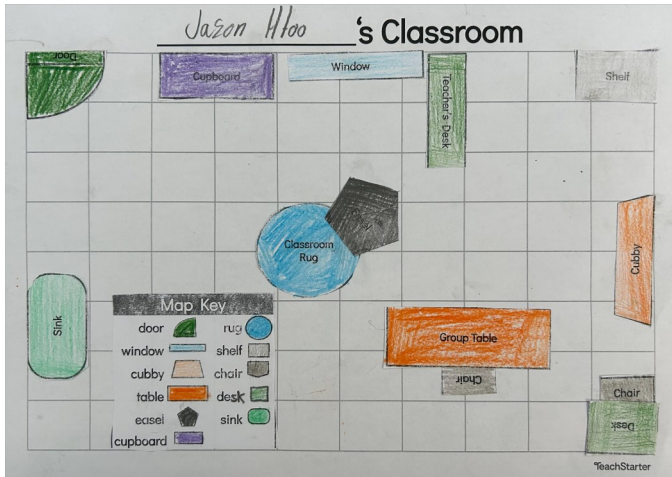
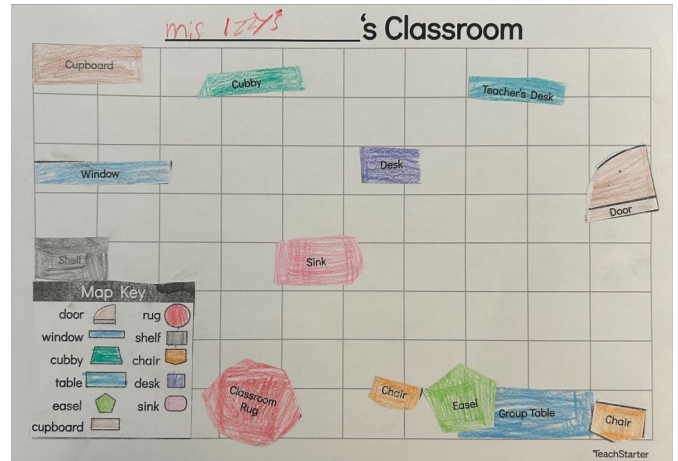
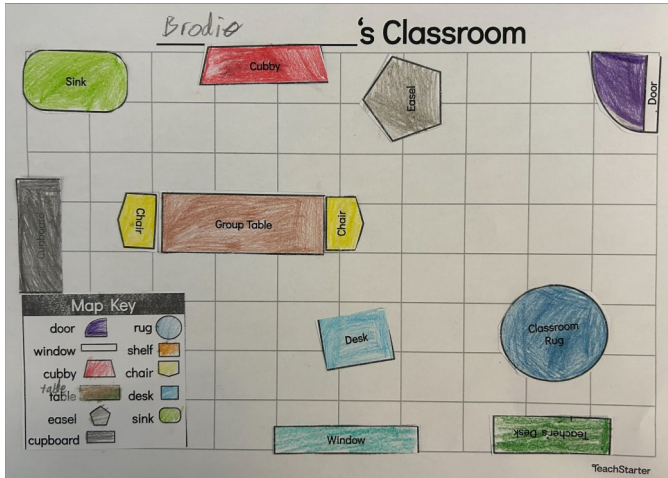
Kind regards

Jo

What's happening in Room 2

Room 2 Maths

In Room 2 the student's have been learning to interpret and create two-dimensional maps as part of location and transformation during Maths. The students have been using words such as inside, under, on top, first, second, beside, left and right. This week the students have designed their own classroom and drawn a diagram of their bedroom. Students had to consider scale to ensure they fitted everything in the rooms. These are some of the classrooms and bedrooms:



What's happening in Room 10

Room 10

Students read the book 'The Best Part of Me' and have written about the best part of themselves. Here are some examples



My hair is so special! It has its own personality. I love the shines and twirls. My hair is like glittering pearls. My hair used to be so light, it looked almost white! As I got older it got darker but its still very blonde, alright! I LOVE having blonde hair. My hair is a part of me!

Vada



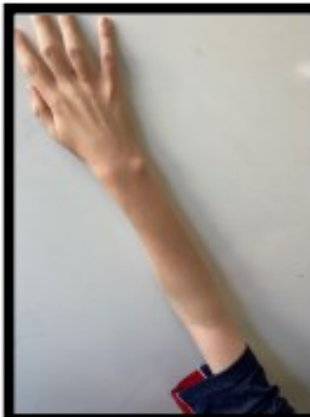
MY HAIR.

My hair was always a mess even when I was a baby.

My hair is curly the colour of my curly hair is brunette.

It's always a tangled mess but I don't care I love my hair, My curly brunette hair.

Mia



My Arms

I choose my arms because they help me carry stuff around. My favourite position in soccer is goalkeeper. My arms let me save the goals. They let me hold the door for others when they're coming. Arms are great and useful. I'm happy I have arms, you should be too.

Taj

This is why I love my eyes

I like my eyes because without my eyes I wouldn't see anything. I might bump in to things like glass and plants. I like to adventure and I like to see dogs and cats and go fishing with my dad. But if I didn't have eyes I couldn't do those things. I just love to see my baby sister smile and I like to see flowers especially poppy's because they are red and a sign of memories for the soldiers. This is why I love my eyes.

Tak



Lightning Reef Primary School YMCA Outside School Hours Care

What have we been up to in OSHC?

This week, our OSHC children have been having lots of fun participating in a range of child-led and planned experiences at our OSHC program! We have a range of healthy options each day for afternoon tea. We explore different areas of play including sensory, craft, physical and creative play through our clubs! We have art club, dance club, cooking club and more! WELCOME Harold the Hermit Crab, we are super excited to have you at LRPS!

Check out some of our recent activity highlights:



What is upcoming in OSHC?

See below some very exciting activities we have planned over the upcoming weeks that has been chosen by some of our OSHC children.

After School Care Program

Week Starting Date: Monday 21ST October – Friday 25th October, 2024

SCIENCE CLUB:

Aluminum foil boat

Children can build a boat that will float, can it hold the YMCA teddy?! We will test our creations!

COOKING CLUB:

Fruit Smoothies

Children can help with cutting up the fruit to blend (their choice of which fruit) to make their own fruit smoothie! Verbal suggestion by Izzy P and Athena B

JEWELLERY CLUB:

Beaded Necklaces

Using various beads and string, children can create their own named necklaces to take home!

DRESS UP CLUB:

Face Masks

Using paper plates, children can create their own face mask! Be who ever you would like to be, then add a string to wear.

PROMO

Paint and Sip

With a warm milo or fruit juice, let's all paint together! Children can pick from various themes! Let's create a new display!

It's not too late to book in! Head over to our website www.childrensprogramms.ymca.org.au to register and make a booking.

CONTACT US

P: 0428 516 192

E: lightningreefoshc@ymca.org.au

W: childrensprogramms.ymca.org.au



HAPPY BIRTHDAY

Happy birthday to those students who had a birthday in the last fortnight.



REMINDER

Please remember smoking is banned within four metres of an entrance to all Victorian Schools and within the school grounds, this includes our shared entrance and the bus stop



Lost property

Please remember to check lost property regularly. It is located just inside our foyer entrance.

